

CDIP Wave Information

Santa Barbara & Ventura Counties



BUOY MEASUREMENTS

<http://cdip.ucsd.edu/> and click on 'Recent'

WAVE MODELS - NOWCAST

REGIONAL MODEL

http://cdip.ucsd.edu/?nav=recent&sub=nowcast&xitem=socal_now

LOCAL MODLES

http://cdip.ucsd.edu/?nav=recent&sub=nowcast&xitem=sb_channel

http://cdip.ucsd.edu/?nav=recent&sub=nowcast&xitem=santa_monica

WAVE HEIGHT PLOTS

http://cdip.ucsd.edu/?nav=recent&sub=nowcast&xitem=barb_hs

http://cdip.ucsd.edu/?nav=recent&sub=nowcast&xitem=vent_hs

NET MODEL PREDICTION DATABASE

<http://cdip.ucsd.edu/?moplist=Overview>

http://cdip.ucsd.edu/?moplist=Overview&xitem=nowcast&xregion=Southern_California

http://cdip.ucsd.edu/?moplist=Santa_Barbara_County

http://cdip.ucsd.edu/?moplist=Ventura_County

http://cdip.ucsd.edu/?moplist=Santa_Barbara_County&mop=B0221&xitem=tmap

http://cdip.ucsd.edu/?moplist=Ventura_County&mop=VE415&xitem=tmap



WAVE MODELS - FORECAST

<http://cdip.ucsd.edu/?nav=recent&sub=forecast>

WAVE HEIGHT PLOTS

http://cdip.ucsd.edu/?nav=recent&sub=forecast&xitem=fp_sbc_000

http://cdip.ucsd.edu/?nav=recent&sub=forecast&xitem=fp_ven_000

TIDES/FLOODING

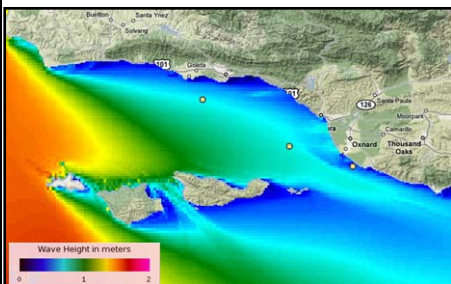
<http://cdip.ucsd.edu/?nav=recent&sub=forecast&xitem=tide&xindex=027>

<http://cdip.ucsd.edu/?nav=recent&sub=forecast&xitem=tide&xindex=022>

NET MODEL PREDICTION DATABASE

http://cdip.ucsd.edu/?moplist=Overview&xitem=sforecast&xregion=Southern_California

<http://cdip.ucsd.edu/?moplist=Overview&xitem=buoyfc&mop=111>



Coastal Data Information Program
Scripps Institution of Oceanography

Email: www@cdip.ucsd.edu

Phone: 858-534-3032